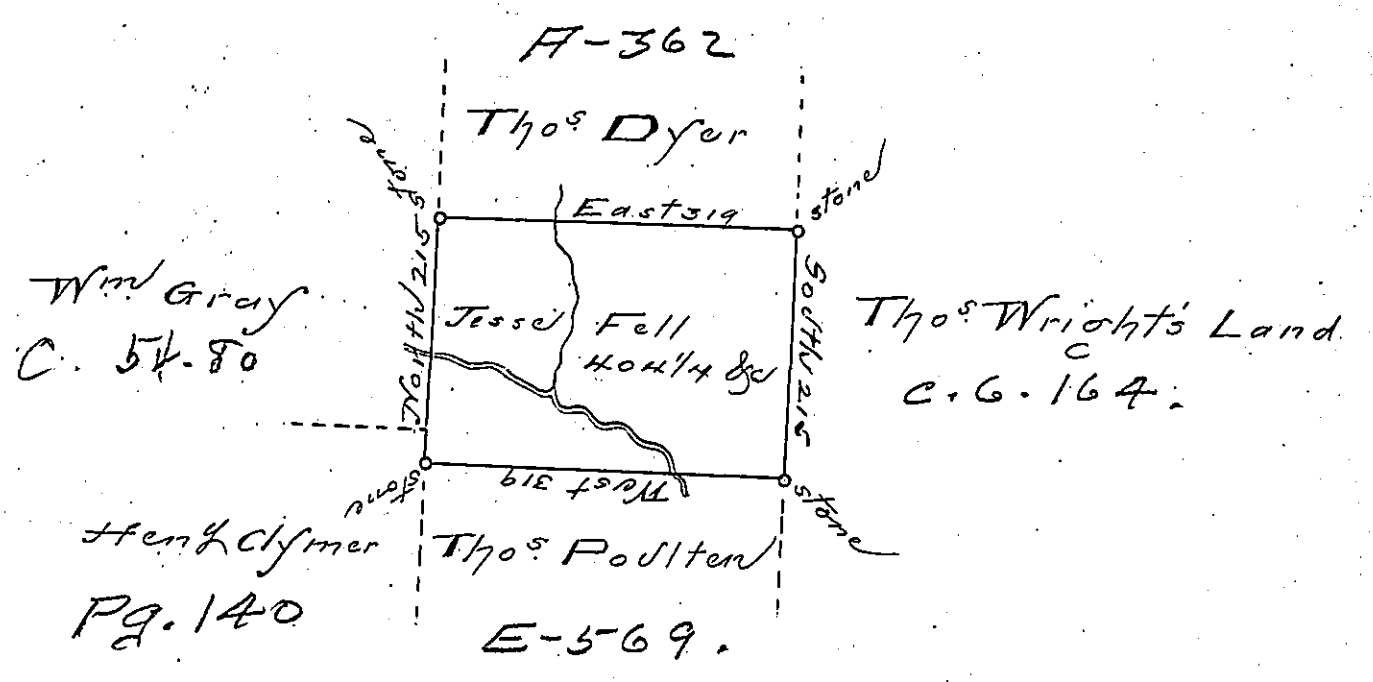


Denison -
Luzerne



A draft of a tract ^{a tract} of land called
 Situate on the waters Lehi joining Land Surveyed
 for Thos Poulton and others in the County of
 Luzerne containing four hundred & four acres
 1/4 allowance of six cent for roads &c.
 Surveyed for Jesse Fell the 28th Day of June
 1792 in pursuance of a warrant dated the
 4th Day of April 1792
 To Daniel Brodhead Esq } by Wm Gray Esq
 Suror. Gen. }

IN TESTIMONY that the above is a copy of the original remaining on file in the
 Department of Internal Affairs of Pennsylvania, made con-
 formably to an Act of Assembly approved the 16th day of
 February, 1833, I have hereunto set my Hand and caused
 the Seal of said Department to be affixed at Harrisburg, this
 — Hird — day of — September — 1895.
 James Watta
 Secretary of Internal Affairs.